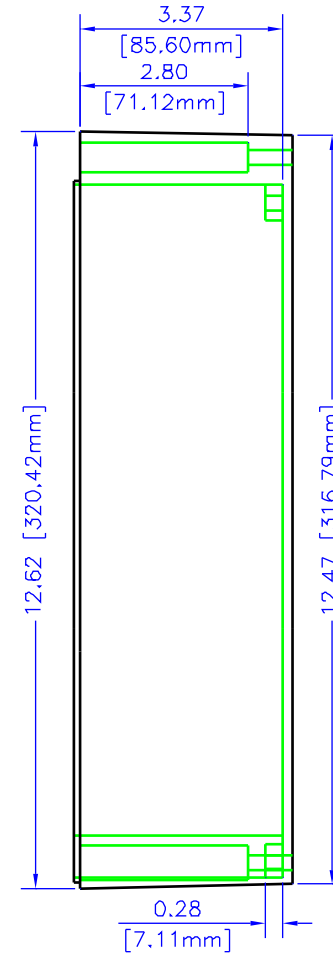
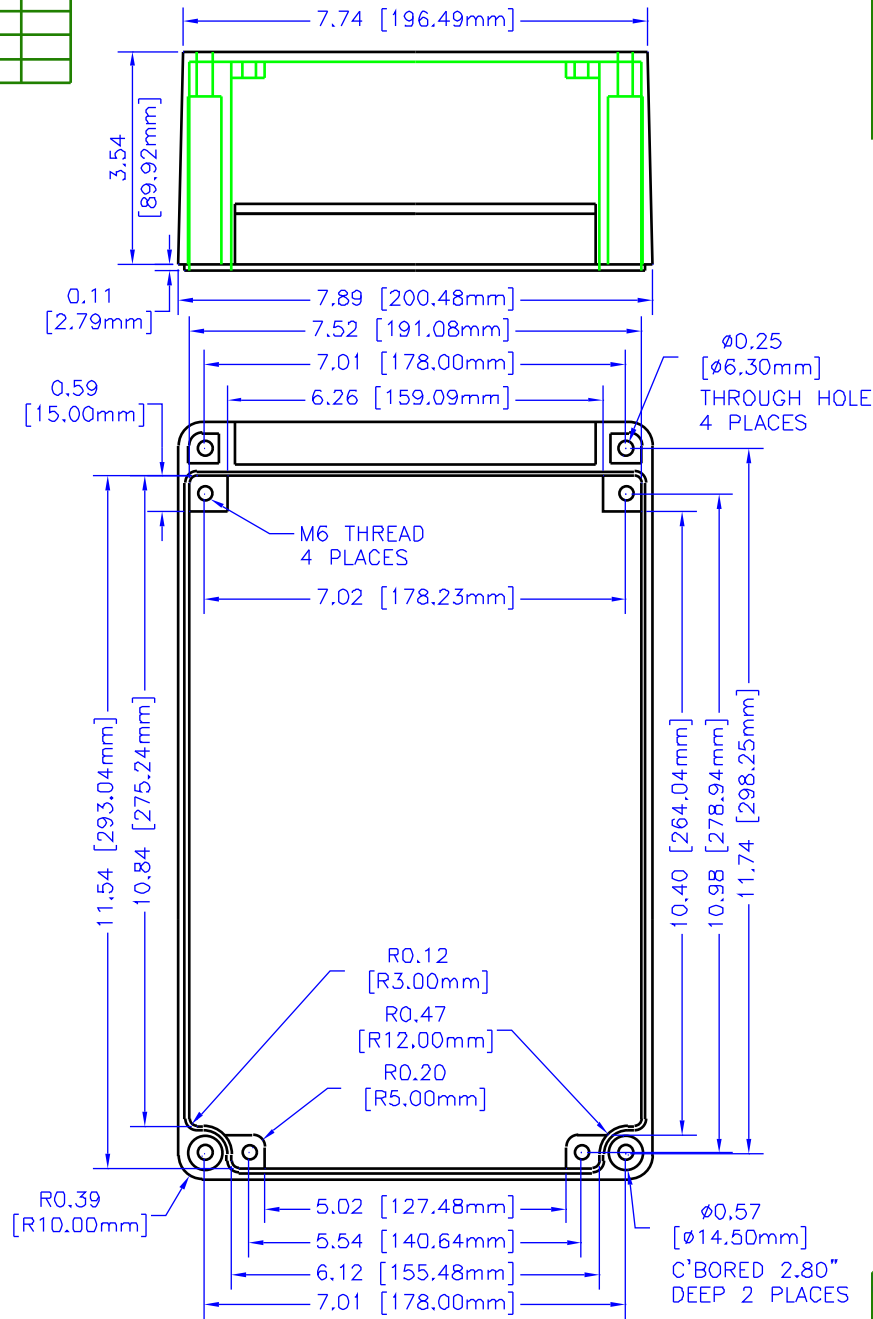


REV	DESCRIPTION	DATE

## NOTES

**MATERIAL** TWO PIECE MOLDED FIBERGLASS REINFORCED POLYESTER CONSTRUCTION, COMES WITH HINGED POLYFIBER COVER WITH A ACRYLIC WINDOW, RECESSED NEOPRENE GASKET WITH TONGUE AND GROVE CONSTRUCTION, THREADED STAINLESS STEEL INSERTS PROVIDED FOR INTERNAL MOUNTING,

**COLORS** LIGHT GRAY (RAL 7032)



BOX VIEW

UNLESS OTHERWISE SPECIFIED  
DIMENSIONS ARE IN INCHES  
xx +/- .1  
xxx +/- .010  
SLITS +/- .002  
ANGLES +/- .5 DEG

NOTICE  
HAMMOND CLAIMS PROPRIETARY RIGHTS TO THE MATERIAL ON THIS DRAWING. IT IS INTENDED TO BE USED AS A REFERENCE FOR ENGINEERING INFORMATION ONLY. THIS INFORMATION MAY NOT BE USED TO MANUFACTURE PRODUCTS WITHOUT WRITER PERMISSION FROM HAMMOND MANUFACTURING.



**HAMMOND  
MANUFACTURING**

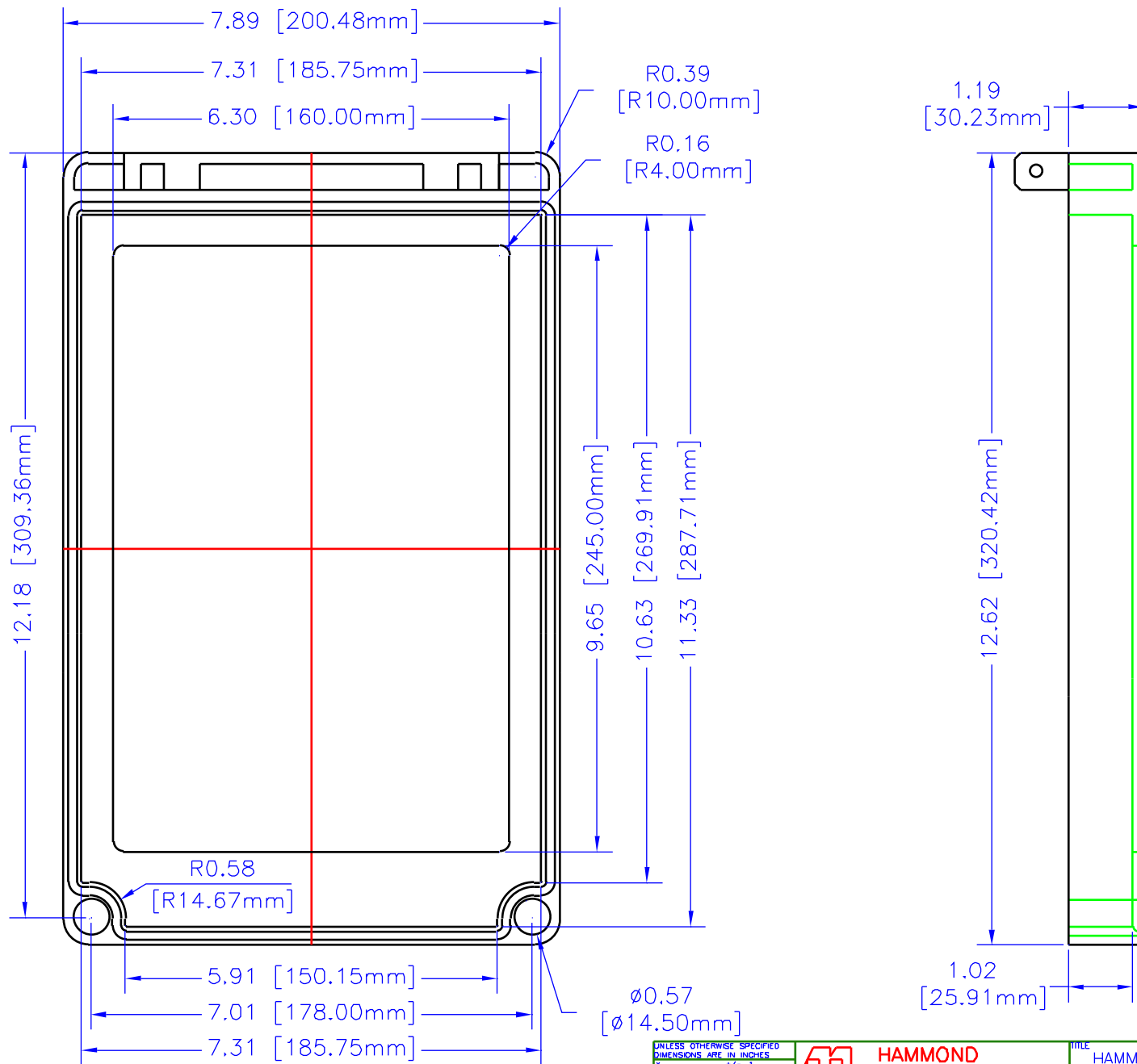
WEB: [WWW.HAMMONDMFG.COM](http://WWW.HAMMONDMFG.COM)

TITLE  
HAMMOND R130 SERIES  
POLYESTER ENCLOSURE

DRAWN BY MJM DATE 12/08/01

SCALE PAGE 1 OF 2

PART NUMBER  
R131-202-000



LID VIEW

UNLESS OTHERWISE SPECIFIED  
DIMENSIONS ARE IN INCHES

XX	+/- .02
XXX	+/- .010
FUITS	+/- .005
ANGLES	+/- 5 DEG

NOTICE:  
HARDWARE IS THE PROPERTY OF HAMMOND MANUFACTURING. IT IS INTENDED TO BE USED AS A REFERENCE FOR INFORMATION ONLY. THIS INFORMATION MAY NOT BE USED TO MANUFACTURE PRODUCT WITHOUT WRITTEN PERMISSION FROM HAMMOND MANUFACTURING.



**HAMMOND  
MANUFACTURING**

WEB: [WWW.HAMMONDMFG.COM](http://WWW.HAMMONDMFG.COM)

TITLE	
HAMMOND R130 SERIES POLYESTER ENCLOSURE	
DRAWN BY	DATE
MJM	12/08/01
SCALE	PAGE
	2 OF 2
PART NUMBER	
R131-202-000	