

1591XX

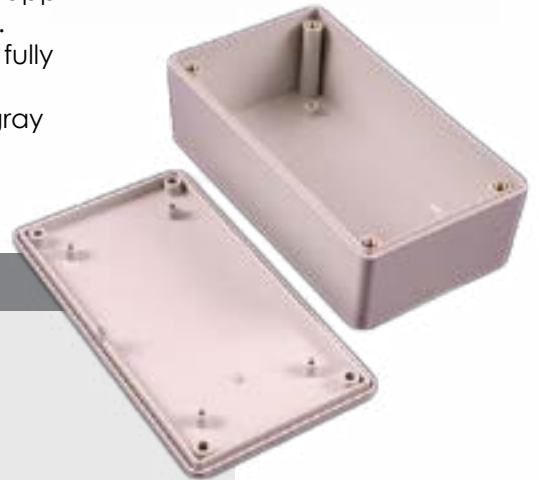


Multi-purpose Enclosures



Key Features:

- Ideally suited for mounting printed circuit boards horizontally.
 - Internal sides of enclosure are smooth for easy connector installation (see photos) - except for the largest enclosure the 1591XXF size which is a universal type which includes P.C.board standoffs in the lid and enclosure PLUS includes card guides.
 - Strong tongue and groove lid to box construction provides protection against access of dust and splashing water.
 - Designed to meet IP54.
 - Lid and box both contain - molded in PC board standoffs.
 - Standard black and gray versions molded from easy to machine, flame retardant ABS plastic (material carries a UL flammability rating of 94V-0).
 - Transparent blue and all economy versions are molded from general purpose (not flame-retardant) plastic.
 - Stocked in satin texture black and grey.
 - On standard versions, the lid is secured with M3 x 10 mm Philips machine screws threaded into integral brass bushings. Perfect for applications with repetitive assembly and disassembly are required.
 - Economy versions are assembled with self tapping screws into fully plastic posts.
 - Black and transparent blue enclosures include black screws, gray enclosures include nick plated screws.
- **If you require vertical board mounting, try "1591" on page 12**

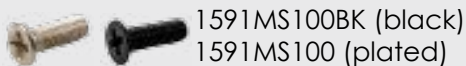


Accessories

Flange Kits (see page)



100-pack of replacement screws



1591MS100BK (black)
1591MS100 (plated)

Belt Clip Kits



1599CLIP (black)
1599CLIPGY (gray)

PC Board Screws



1593ATS50 (50-pack)
1593ATS100 (100-pack)



www.hammondmfg.com

USA

(716) 630-7030

Canada

(519) 822-2960

Quebec

(450) 975-1884

Europe (UK)

01256 812812

Australia

+61-8-8240-2244

1591XX



Multi-purpose Enclosures

Standard Version	Standard Flanged	Economy Version	Economy w/ Flangd Lid	Color	Units	Length	Width	Depth (less lid)
1591XXMBK	1591XXMFLBK	1591XXMSBK	1591XXMSFLBK	Black	Inches mm	3.3 85	2.2 57	0.9 24
1591XXMGY	1591XXMFLGY			Grey				
1591XXMTBU				Transparent Blue				
1591XXLBK	1591XXLFLBK	1591XXLSBK	1591XXLSFLBK	Black	Inches mm	3.4 87	2.2 57	1.4 36
1591XXLGY	1591XXLFLGY			Grey				
1591XXLTBU				Transparent Blue				
1591XXABK	1591XXAFLBK	1591XXASBK	1591XXASFLBK	Black	Inches mm	3.9 100	2 51	0.8 22
1591XXAGY	1591XXAFLGY			Grey				
1591XXATBU				Transparent Blue				
1591XXSBK	1591XXSFLBK	1591XXSSBK	1591XXSSFLBK	Black	Inches mm	4.3 110	3.2 82	1.6 41
1591XXSGY	1591XXSFLGY			Grey				
1591XXSTBU				Transparent Blue				
1591XXBBK	1591XXBFLBK	1591XXBSBK	1591XXBSFLBK	Black	Inches mm	4.4 113	2.5 63	1.1 28
1591XXBGY	1591XXBFLGY			Grey				
1591XXBTBU				Transparent Blue				
1591XXCBK	1591XXCFLBK	1591XXCSBK	1591XXCSFLBK	Black	Inches mm	4 121	2.6 66	1.4 37
1591XXCGY	1591XXCFLGY			Grey				
1591XXCTBU				Transparent Blue				
1591XXTBK	1591XXTFLBK	1591XXTSBK	1591XXTSFLBK	Black	Inches mm	4.8 123	3.2 83	2.2 56
1591XXTGY	1591XXTFLGY			Grey				
1591XXTTBU				Transparent Blue				
1591XXGBK	1591XXGFLBK	1591XXGSBK	1591XXGSFLBK	Black	Inches mm	4.8 121	3.7 94	1.4 35
1591XXGGY	1591XXGFLGY			Grey				
1591XXGTBU				Transparent Blue				
1591XXUBK	1591XXUFLBK	1591XXUSBK	1591XXUSFLBK	Black	Inches mm	4.86 123.5	4.86 123.5	2.25 57
1591XXUGY	1591XXUFLGY			Grey				
1591XXDBK	1591XXDFLBK	1591XXDSBK	1591XXDSFLBK	Black	Inches mm	6 152	3.2 82	1.8 47
1591XXDGY	1591XXDFLGY			Grey				
1591XXDTBU				Transparent Blue				
1591XXEBK	1591XXEFLBK	1591XXESBK	1591XXESFLBK	Black	Inches mm	7.6 193	4.4 113	2.2 58
1591XXEGY	1591XXEFLGY			Grey				
1591XXETBU				Transparent Blue				
1591XXFBK	1591XXFBLBK	1591XXFSBK	1591XXFSFLBK	Black	Inches mm	8.7 221	5.9 150	2.3 60
1591XXFGY	1591XXFBLGY			Grey				

